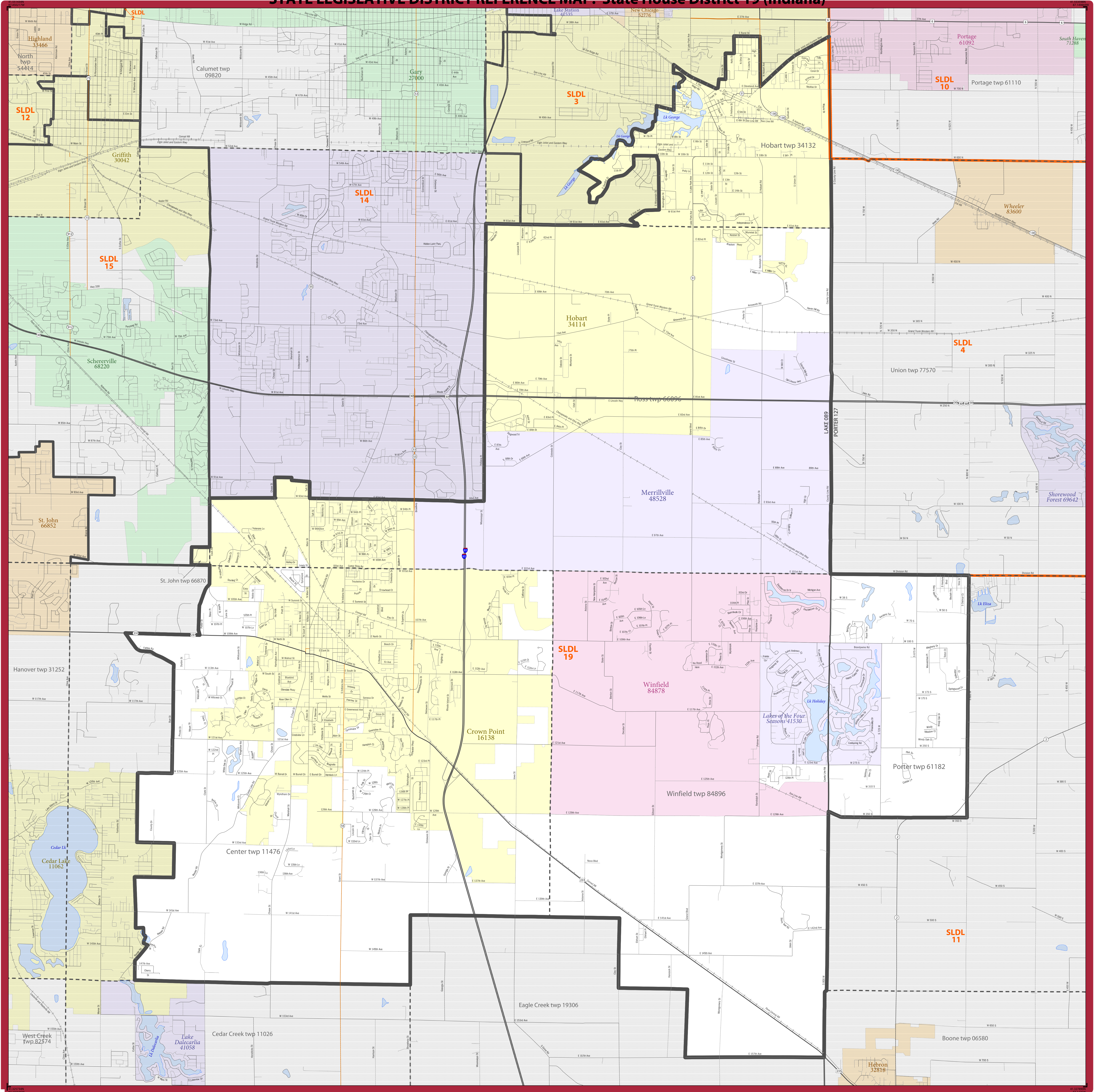


STATE LEGISLATIVE DISTRICT REFERENCE MAP: State House District 19 (Indiana)



LEGEND

SYMBOL DESCRIPTION	SYMBOL	LABEL STYLE
International	--- --	CANADA
Federal American Indian Reservation	[Pattern]	L'ANSE RES 1880
Off-Reservation Trust Land	[Pattern]	T1880
State American Indian Reservation	[Pattern]	Tama Res 9400
State Legislative District - Lower (House)	[Color]	SLDL 94
State (or statistically equivalent entity)	---	NEW YORK 36
County (or statistically equivalent entity)	---	ERIE 029
Minor Civil Division (MCD)	---	Bristol town 07485
Consolidated City	[Pattern]	MILFORD 47500
Incorporated Place ²	[Color]	Davis 18100
Census Designated Place (CDP) ²	[Color]	Incline Village 35100

DESCRIPTION	SYMBOL	DESCRIPTION	SYMBOL
Interstate	[Symbol]	Water Body	[Symbol]
U.S. Highway	[Symbol]	Pleasant Lake	[Symbol]
State Highway	[Symbol]	Outside Subject Area	[Symbol]
Other Road	[Symbol]		
Railroad	[Symbol]		

Where international, state, county, and/or MCD boundaries coincide, the map shows the boundary symbol for only the highest-ranking of these boundaries.

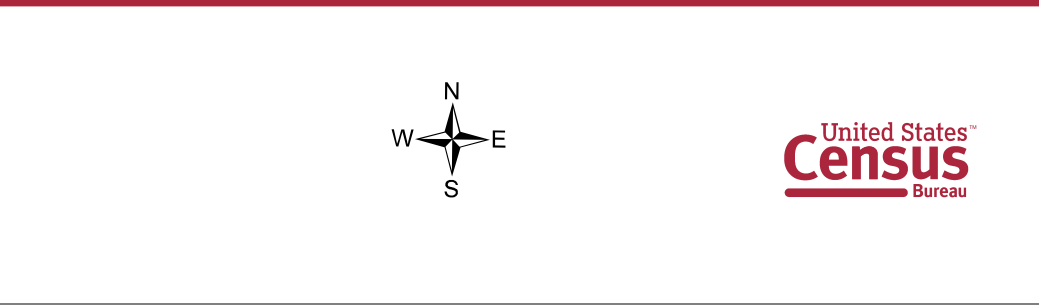
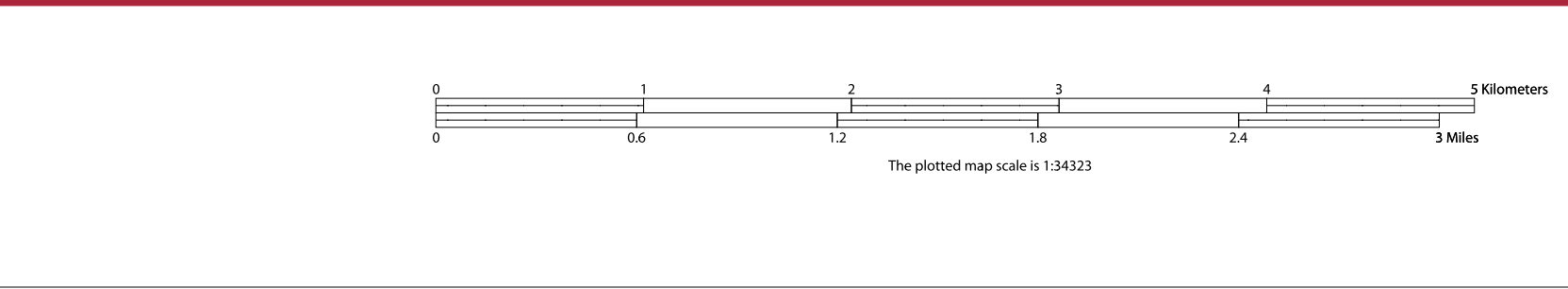
1 MCD boundaries are shown in the following states in which some or all MCDs function as general-purpose governmental units: Connecticut, Illinois, Indiana, Kansas, Maine, Massachusetts, Michigan, Minnesota, Missouri, Nebraska, New Hampshire, New Jersey, New York, North Dakota, Ohio, Pennsylvania, Rhode Island, South Dakota, Vermont, and Wisconsin. (Note that Illinois and Nebraska have some counties covered by nongovernmental precincts and Missouri has most counties covered by nongovernmental townships.)

2 Place label color corresponds to the place fill color.
Label colors: Davis Davis Davis Davis Davis

State legislative districts are delineated based on the results from the 2010 Decennial Census; all other legal boundaries and names are as of January 1, 2010. The boundaries shown on this map are for Census Bureau statistical data collection and tabulation purposes only; their depiction and designation for statistical purposes does not constitute a determination of jurisdictional authority or rights of ownership or entitlement.

Geographic Vintage: 2010 Census (reference date: January 1, 2010)
Data Source: U.S. Census Bureau's MAI/TIGER database (BAS13)
Map Created by Geography Division: May 18, 2013

Projection: Albers Equal Area Conic
Datum: NAD83
Spheroid: GRS 80
1st Standard Parallel: 39 26 11
2nd Standard Parallel: -41 05 43
Central Meridian: -86 26 28
Latitude of Projection's Origin: 37 46 18
False Easting: 0
False Northing: 0



PARENT SHEET 1
Total Sheets: 1
Index Sheets: 0
Parent Sheets: 1

NAME: State House District 19
ENTITY TYPE: State Legislative District - Lower (House)
ENTITY CODE: 019
ST: Indiana (18)
CO: Lake (089), Porter (127)

SLDL REF MAP (PART) 250100001